

Mannequin®

Welcome to Mannequino!

We look forward to showing you what we do and how we make it happen!

Mannequino is a uniquely stylish and contemporary body form, with a design-led aesthetic, purpose built for international use and reducing impact.

We make smart modular, flat packing systems for visual merchandising and fashion garment display.

Mannequino has grown from a prototype to a whole family of forms over the past 10 years.

We're celebrating where we started and what we've achieved with our clients, whom have helped us shape Mannequino.

We're very proud and grateful to everyone who has been part of our journey and are very excited to show you what we do!

We create simple solutions to overcome complex challenges. Circularity, durability, quality and longevity are our key ingredients. Our strategy is long term.

We give careful consideration to material consumption, and design feasible end-of-life strategies into our products.

We make Mannequinos here in the UK in our own production facility with our patented system.

You'll see how we are turning manufacturing waste into mushrooms and creating an open loop network so that we can integrate with our local community and not only strive towards zero waste, but evolve great new high quality products from it and help to support food security.



modular design - flat packing - durable - storable - shippable - feasible end of life plan



You can see more about Mannequino here:



Video link

https://youtu.be/L_WgbtG98iE



1 The Mannequino® Concept

Tackling new demands head-on

There's no doubt that running international retail operations is highly challenging, especially the issue of how this is achieved within the context of reducing social and environmental impact.

We feel the challenge to dramatically reduce impact is important work, and so using our expertise in Industrial design, we applied analytical and critical thinking to tackle these rigorous demands, and by doing so we created an entirely fresh approach. With no heritage to grow out of, we were free to explore an entirely modern direction.

Mannequino is a unique type of bodyform, with a design-led aesthetic, purpose built for international use. Using our patented 3D digital shaping system, we manufacture all our products in the UK under our registered trademark, Mannequino®.

We've invested in highly efficient digital manufacturing technologies alongside our patented system, combining these technologies makes it possible for us to manufacture Mannequino here in the UK, and this provides significant strategic, logistic, social & environmental advantages for us and, most critically, our clients.

We choose to design innovations to reduce the environmental and social impact of display products. We've totally re-engineered the manufacturing processes involved in making display body forms, creating a new type of product that is a fully recyclable, non-toxic, and made in a non-hazardous, completely transparent, working environment.

Mannequino's flat-packing design provides our clients with significant advantages for international visual merchandising, and this brochure shows you how and why.

By making time to assess our decisions, we can create a better environment, and we aim to make it as straight forward to assess as possible.



UK Manufacturing, transparent supply chain

Manufacturing our own products in the UK gives us total control of the quality and know-how involved in making our products. Our facility is close enough for clients to visit and close to our European material suppliers.

Creating more with less: Our patented technology makes it possible to knit flat panels of sheet Polypropylene (PP) into 3D human forms; this unique method of building forms uses literally a fraction of the material bulk that is associated with making plastic and resin body forms and mannequins.



2 Durable, Flexible and Robust

Mannequino forms may look delicate, but in reality they are extremely robust and hard to damage, as many store staff have now successfully put to the test.

Mannequino has been rolled out and built by store staff in stores internationally, we are proud to have received validation from some of the world's most indisputably forward thinking and innovative brands, and featured in the front windows of the most influential boutiques and department stores internationally.

Good reach across garment styles

We have put much insight, functionality and reach into our body-shape designs, which are notably used for a diverse range of garment styles, from couture, luxury, tailoring, luxury knitwear, casualwear, outerwear, activewear to extreme sports wear. This reach has been achieved using our current modular components in many different ways by the fantastically creative teams who specify Mannequino.

Mannequino Modular Kits: Flexibility when you need it

Mannequino kits allow you to hang, light up, use on a stand, stand on a table and pack away, saving valuable retail space.

Keeping up with your evolving business

Our flat packing components also make it easy to ship from one location to another globally, inexpensively.

A highly dynamic way of working

We've helped many new and established brands look good in places and ways they'd only dreamt of doing before. From high end fashion, technical sportswear, outerwear, knitwear and heritage clothing brands.

Multi-functionality

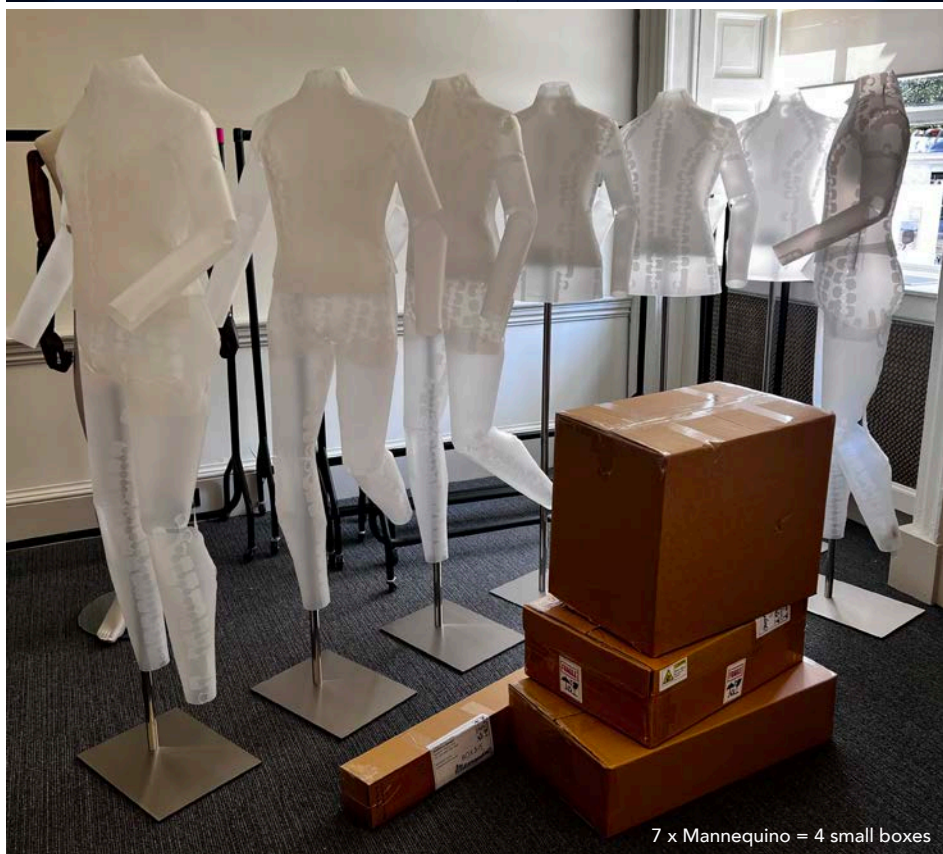
Our components create a lot of range in how they're used, we design our components for multi-functionality, built into one product. Our range of components create super opportunities to build on Mannequino kits from one season to the next, and spread the cost of purchasing the full system over time.



Our modular components create a range of options and looks



Flexible use of components: Make the long term use more dynamic in store when it is needed, and packed away into a compact footprint when it isn't.



Key Features of Mannequino

Elevate your garments and brand with our unique design led aesthetic

You can put the spotlight on your products by using a Mannequino, our near invisible forms leave all the attention on your garments.

Dynamic merchandising possibilities

Mannequino is a highly versatile, modular, lightweight system, and can be lit internally, allowing high visibility.

The lightweight forms create a totally new approach to displaying stock and transporting marketing campaigns internationally.

Ultra-portable

Our display busts cost a fraction of the money to courier worldwide compared to standard busts, and if you want to move your display stock to different locations for operational developments, with the Mannequino, you can.

Space-saving for premium real estate

Minimal storage space is needed for Mannequino's flat pack storing case.

Easier global campaign co-ordination

Make the execution of your global campaigns operationally faster, easier to implement, impact conscious and cost effective.

Innovative design and production

Smart digital production systems, cradle to cradle thinking, smart designs, with material and energy efficiency.

Innovative open loop recycling system

We grow Oyster mushrooms with our shredded cardboard packaging offcut waste when you order.

Modular Busts

Our Bust system components are designed for multi-functionality. You can build on your Mannequino Bust components from one campaign to the next, depending on your needs.

Lightweight Hanging

The Mini Support Frame is used for lightweight hanging. It is a compact and lightweight solution. It packs neatly inside the Bust carry case.



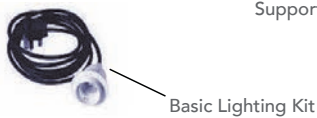
Heavyweight Hanging

Multiway Support Frame for hanging heavier weight garments and rucksacks, and easily transfers onto our stands.



Hang & Light

Our signature internal Lighting is achieved with the Multiway Support Frame. The internal lighting is created using our Basic LED lighting kit.



Modular Busts

Our stands allow Mannequino Busts to be used and repurposed in many different contexts where hanging isn't required.

Table Top stand

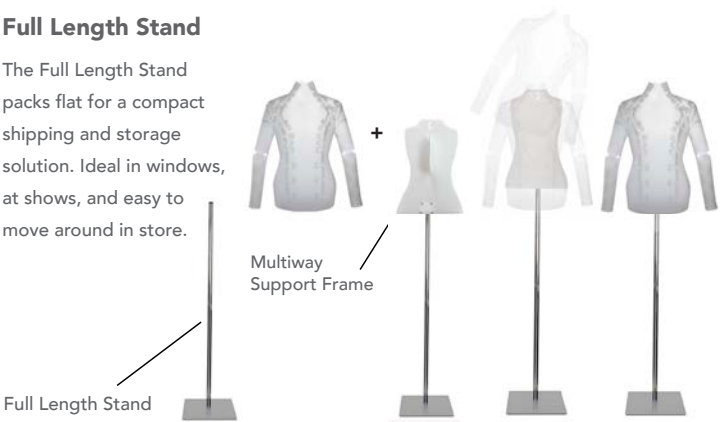
The Table Top Stand packs flat for a compact shipping and storage solution. Ideal in store for shelf displays and wall systems, tables and islands.



Table Top Stand with Lighting

Full Length Stand

The Full Length Stand packs flat for a compact shipping and storage solution. Ideal in windows, at shows, and easy to move around in store.



Full Length Stand with Lighting



Full Body Mannequino

A Cradle-to-Cradle Modular System

The Full Body Mannequino is designed for lightweight deployable display needs and flat packs away into an incredibly small footprint for a mannequin form. The naturalistic design with active adjustable gestures have good reach across many garment styles.

The flat pack style of the Full Body makes it incredibly easy and cost effective for shipping and storage purposes, the system packs away into a small box.

The versatile flexible nature of the Full Body means that it is resilient and durable. It is easy to adjust for different display needs and can be reused time and time again, increasing the life cycle of the product.

The Full Body is straightforward to assemble making it ideal for events, exhibitions, pop up installations and international roll out campaigns, and afterwards can be disassembled away into its tiny box.

The Legs can also be adjusted for different leg positions, to provide the gestural qualities desired - from a relaxed standing pose, to a more active pose.

The Arms articulate in 2 positions at the elbow providing various gestures and are designed to pop off and on to allow a very easy garment fitting.

The system comes with a handy two part stand pole, which fits into the small box making it ideal for creating a compact shipping solution and storage footprint (58cm x 48cm x 14cm).

Repurposing:

The components of the Full Body can also be converted into five different forms using the internal support frame, stand and hanging cables: 1. Full Body on stand, 2. Torso on stand, 3. Torso hanging, 4. Legs hanging and 5. Full Body hanging. (see next pages)



Male Full Body Standing



The Full Body Mannequino BOX makes it ideal for creating a compact shipping solution and storage footprint (58cm x 48cm x 14cm).



Female Full Body Standing



Male Full Body Standing



Female Full Body Standing

Full Body Modular System Assets



- 1. Male Full Body on stand
- 2. Male Torso on stand
- 3. Male Torso hanging
- 4. Male Legs hanging
- 5. Male Full Body hanging

Repurposing:

The components of the Full Body can also be converted into five different forms using the internal support frame, stand and hanging cables: 1. Full Body on stand, 2. Torso on stand, 3. Torso hanging, 4. Legs hanging and 5. Full Body hanging. This creates scope to repurpose all of the assets in different ways for different occasions.



- 1. Female Full Body on stand
- 2. Female Torso on stand
- 3. Female Torso hanging
- 4. Female Legs hanging
- 5. Female Full Body hanging



Male Full Body

The components of the Full Body can be converted into five different forms using the internal support frame, stand and hanging cables. The system packs away into a small box (58cm x 48cm x 14cm) for convenient shipping and storage.



Female Full Body

The components of the Full Body can be converted into five different forms using the internal support frame, stand and hanging cables. The system packs away into a small box (58cm x 48cm x 14cm) for convenient shipping and storage.

Full Body Hanging Mannequino

We're excited to offer a new full body form that hangs, releasing the potential for new and unique styles of creative direction.

Floating forms create an ethereal effect, imagine curating the spaces around them.

It is a convenient and dynamic solution that can be unpacked and put up anytime it is needed. The shipping and storage footprint is merely a fraction of typical body forms.

Hanging Mannequinos are extremely durable and robust, and being lightweight are easy to install.

Weighing in at just 2.3kg the full body hanging forms are easy to hang, holding up to 5kg of garments.

They are easy to adjust for different hanging positions, giving you and your team full creative control to curate your story around them.

For shows and installations it is easy to transport multiple forms with you.

With adjustable arm and leg positions, they can be posed in be static or active postions.



Bust (capped arm) and Full Body Hanging Mannequino used together

Full Body Hanging Mannequino - MALE



Full Body Hanging Mannequino - FEMALE



The Full Body hanging version uses the internal Full Body Multiway support frame, Torso and Legs with hanging cables to make the system.

Full Body Hanging Mannequino - MALE



Holds up to 5kg

Full Body Hanging Mannequino - FEMALE



Full Body Hanging Torso & Shorts Mannequino

We're excited to offer a new Torso & Shorts form that hangs, for super compact and lightweight creative direction.

Floating forms create an ethereal effect, imagine curating the spaces around them.

A dynamic solution that can be unpacked and put up anytime it is needed. The shipping and storage footprint is merely a fraction of typical body forms.

Hanging Mannequinos are extremely durable and robust, and being lightweight are easy to install.

They are easy to adjust for different hanging positions, giving you and your team full creative control to curate your story around them.

For shows and installations it is easy to transport multiple forms with you.

For the full length arm versions, you have adjustable arm positions, which can posed in be static or active positions.



Female Torso & Shorts (capped arm) hanging.

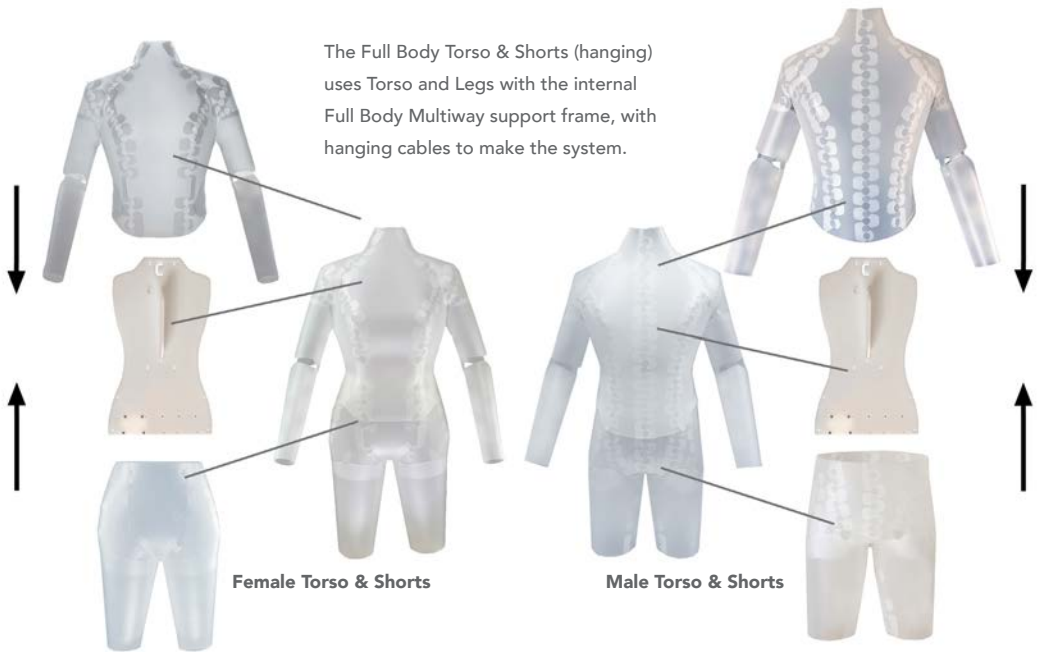
Female Torso & Shorts Hanging Mannequino



Male Torso & Shorts Hanging Mannequino



The Full Body Torso & Shorts (hanging) uses Torso and Legs with the internal Full Body Multiway support frame, with hanging cables to make the system.



Male Torso & Shorts (full length arm) Hanging.



Male Torso & Shorts (capped arm) Hanging.

Male and Female Legs

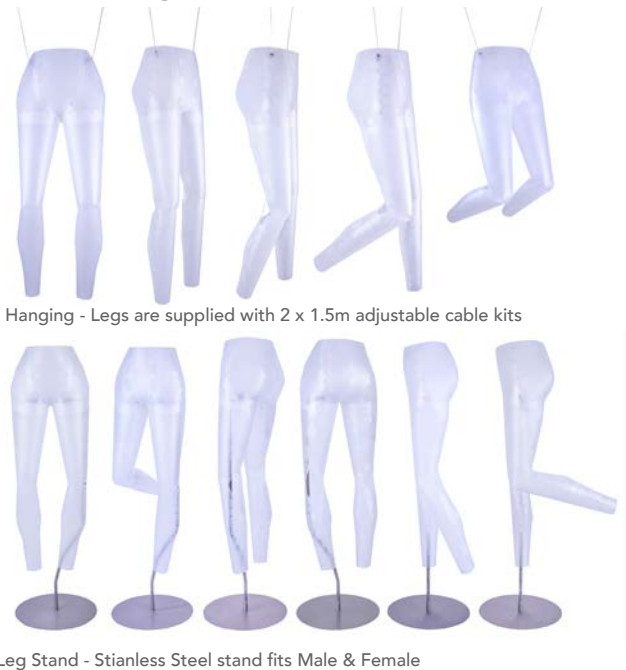
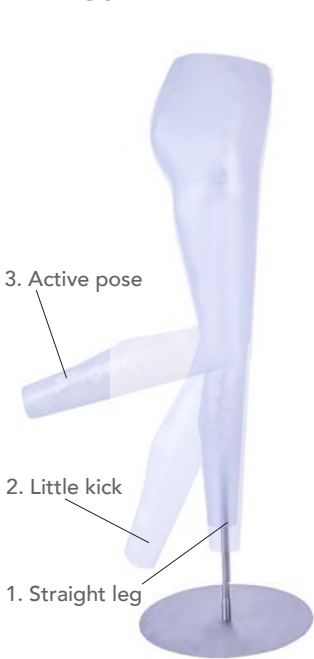
Mannequino Legs bring a new dimension to merchandising, especially for stores with little storage space and dynamic display needs throughout the year. They are superlightweight and pack away into a thin carry case.

Designing multiple values into one:

To hang or stand with one product has many benefits, and one stand that can be used with both Male or Female Legs enables displays throughout the year for both menswear and womenswear, whilst reducing storage issues and typical breakages caused in stock rooms. In an increasingly demanding retail space where requirements are shifting from the typical seasonal approach to a more complex and fluid stock supply. As campaign logistics are becoming more complex, we see the rise in popularity of our range. It is easy to re-style and loved by store staff for its easy to handle, hard to damage design. We take pride in designing products that are sympathetic to store teams.



Three leg positions to create movement and active gestures:



The Short Pant Leg Form

The Short Pant Legs are an amazing new adaption of the Male legs, which, during the spring and summer seasons provide a neat merchandising tool for shorts. The Short Pant leg form can be purchased alone or as a set with the Male Legs. The brilliant thing about getting the kits together is that they use the same hips, you just swap in the short pant thighs and store your long legs flat in the case.



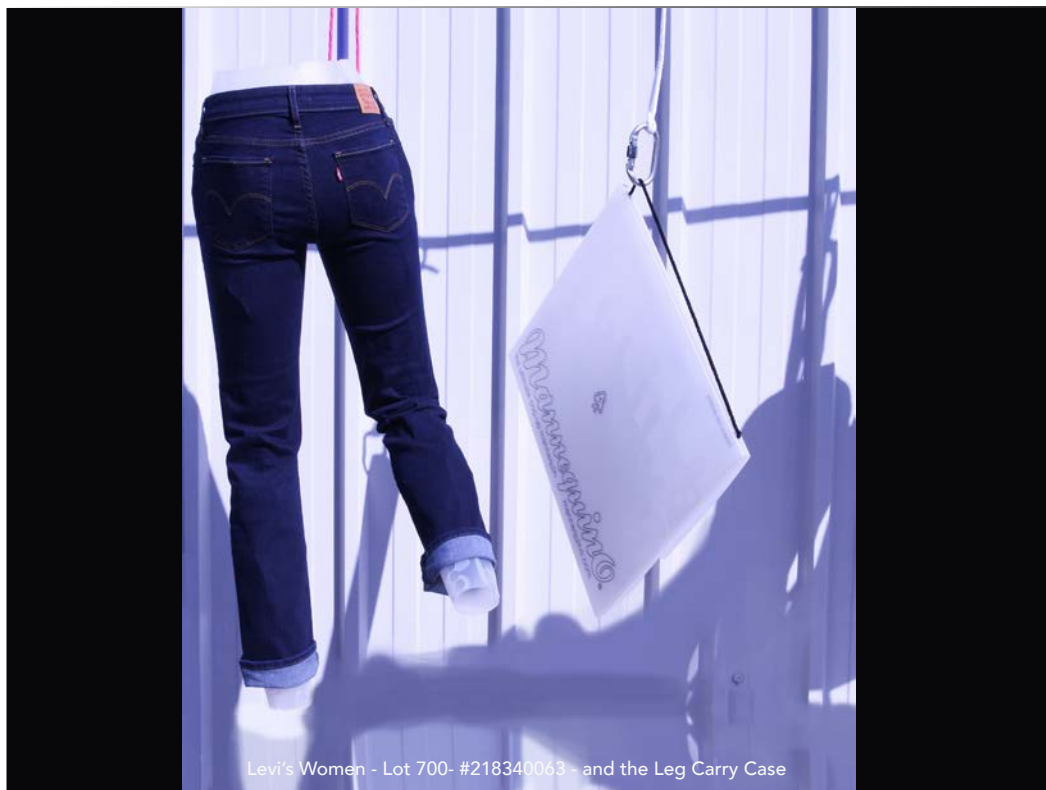
The Leg Carry Case

The leg carry case is unbelievably transportable, when it comes to getting out on location anywhere. This is a highly portable solution, its an easy to assemble and hard to damage asset, which can be packed away after use and recycled and reutilised with ease.



Dimensions: 55cm x 44.5cm x 1.0cm

The leg carry case is a tiny footprint which is easy to store or ship to new locations for launches, events and store relocations.



Levi's Women - Lot 700- #218340063 - and the Leg Carry Case

Mannequino Travel Stand

Travel light for shows

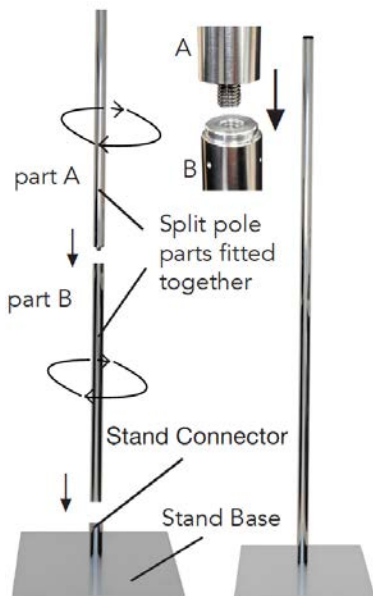
We are now offering our Travel 'split-pole' stand for both Mannequino Busts and our Full Body systems (Male & Female).

You can travel and display your new designs on our Travel stand, with our 2-part split-pole system, which splits our standard 120cm L pole into two parts (part A 61cm and part B 60cm). Now you can get packing with your new looks and show anywhere.

If you've invested in hanging Mannequinos and want to reuse your gear, the split-pole stand is a great way to create longevity in your assets without taking up lots of space, and opening up the world for overseas marketing.



The Travel split-pole stand works with our Bust and Full Body ranges, this is achieved partnered with our Multiway Support Frames.



Full Body Mannequino volume:

To give you an idea for transport and packing, plus the storage footprint, the dimensions are 58cm x 48cm x 14cm.

Full Body Set contains Torso, Legs, FB Multiway, Stainless steel stand (split poles and 6mmD rectangular Stand Base).

Mannequino Travel Stand



Female Bust Standing



Full Body Standing

The Travel split-pole stand works with our Bust and Full Body range.



part A 61cm L
part B 60cm L

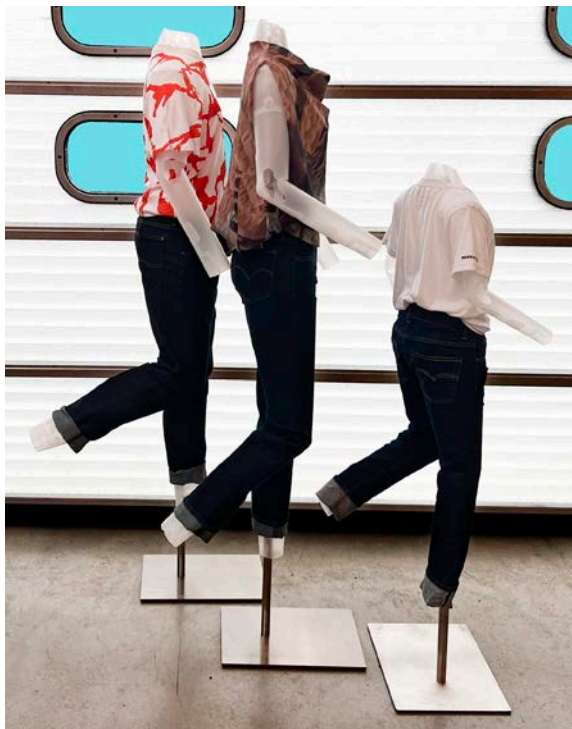
Stand Base



The Child Mannequino 8-10yr

With unisex child full body, or our child bust & legs, you can create fun and fresh new looks. Make installations hanging child full body, or mix busts & legs.

Child Mannequino come on a table top stand or full length stand and can also be used hanging and child busts can be internally lit.





3 Mannequino's design, manufacturing & research centre

Mannequino's unique design comes from high quality R&D and digital manufacturing at our base at in Cambridgeshire.

Our design solutions confront social and environmental impact, whilst reducing material consumption.

Our cradle-to-cradle principles are embedded in our approach to design right from the start.

We employ rigorous design process and product testing to create high quality, lasting products and service, from delivery to our customers and throughout the Mannequino's lifespan.

We listen to our clients and have developed our products to tackle the emerging issues the industry faces.

We're also developing and extending our product range too and are always looking for potential technologies and material solutions for the future.



4 Making a Mannequino

Each Mannequino Carry Case comes with an instruction booklet.

Our simple pictogram instructions provide staff in-store everywhere all they need to build their Mannequino. Its been designed specifically for international use.

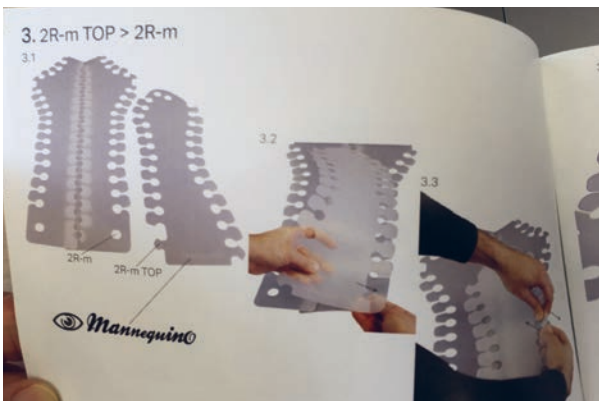
Just an hour to get the hang of it

VM and Store staff put aside one quiet hour to learn to build their first one, after that, they've got it, they'll be able to build up and pack their Mannequinos whenever they're needed.

Mannequino regularly get packed flat, sent to new territories, or stored for another season and campaign, freeing up space for other activities, and creating more flexibility in the long term use of a 3D bodyform.

Video instructions

We also have video instructions to follow online.



5 Designed to reduce impact

Where high volumes are concerned, the best kind of products we can make are those designed to keep the materials used in a 'closed loop'. This means that all materials in a product can be disassembled, recovered and re-used, without down-cycling the value of the material in the process.

Mannequino is designed to be part of a closed loop system

All our components can be manually disassembled by store staff without specialist tools ready for recycling using existing networks.

How much material we use, or rather how much we don't use, and the finishes we don't add are significantly advantageous to the process of repurposing and end of life.

Mannequinos can be reincarnated in the clothing industry in a number of ways, our materials are widely used to make garment components, shoe components, shoe bags, POS materials and packaging. They can also be reincarnated into a new Mannequinos.

Reducing material consumption plays a key part in future proofing our world

Mannequino uses between 10 and 50 times less raw material typically used in traditional plastic bust or mannequin, making it an incredibly efficient design.

It is easy to see why using only 0.5 kilo of material has an immediate impact on the consumption levels of a business, especially in volume.

Extra kilos come at a cost to business in different ways, it won't surprise anyone who has had to move them how much energy it takes, or the costs of shipping, but it will also impact carbon emission targets and the cost of shipping them to a recycling unit.

Thanks to our specialised digital manufacturing techniques and patented panel designs, recycling is highly feasible.



We use 80-98% LESS Material

Make savings across your product lifespan - not just in the purchase

Because of this amazing reduction in material, Mannequino continues to create important savings throughout its lifespan, in shipping costs, in storage space, in carbon emissions, and in its cost to recycle at the end.



Let's take a look at the alternatives - display forms range from 5-25 kilos



6 Extended life span, end of life plan, and re-using materials.

Making informed decisions will have lasting impact, and so we want to make sure you have the detail, all the way to the end of the Mannequino life-span. Here's a quick look at what we're doing to improve the lifespan and environmental impact of plastic body forms - aside from using a lot less plastic.

A. Purity

By using non-glued, non-laminated and un-laquered, unsprayed, unprinted parts, and selecting high quality raw materials produced to the highest standards, Mannequino parts can be recycled without the use of chemicals or solvents that would otherwise be needed to de-laminate and deconstruct them. It also means the material doesn't need to be downcycled.

Our natural finish (uncoated) stainless steel stands are recyclable. According to the British Steel Association, the main alloying elements of stainless steel, chromium, nickel and molybdenum, are highly valuable and can be easily recovered. Our stands are made of high quality and extremely hard wearing, long lasting stainless steel.

B. Material Matters

Polypropylene (PP) is an exemplary plastic and is in high demand. It is also a bi-product, which means it serves a valuable purpose in pollution reduction to other industries. When recycled, PP is ground into pellets at the same factories it was made, and is used in making new sheets.

It is approved as non-toxic by the food industry and for the display of precious garments by museum and costume conservationists.

The percentage of recycled material in every batch varies according to colour availability, but all PP from our suppliers contains some recycled material. And in large volumes, we can supply 100% recycled PP content.

C. Making your display Future Proof

Making an assessment of a product's full lifespan means avoiding hidden costs to a business later on, both environmentally and financially. We're heading into a new era where all products will need to be designed in such a way that every part is recovered and re-used, because of the levels of global consumption.

D. Designed for re-use

At the end of a display bust's lifespan, it can cost as much, if not more, to dispose of as it did to purchase, which is a hidden cost.

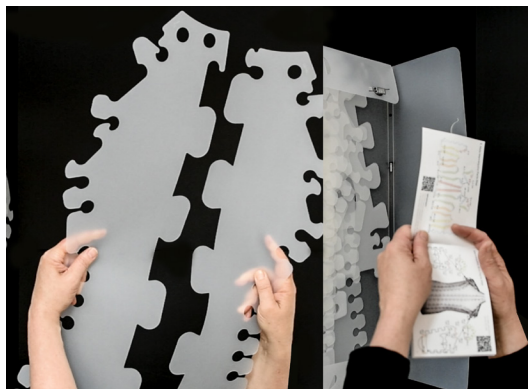
Mannequino tackles after-life by design, with its quick manual deconstruction, store staff can take it apart and recycle them from the store, or in higher volumes utilise Polypropylene recycle networks used by retailers and PP recyclers networks internationally.

PP is an extremely valuable plastic, and is purchased by recyclers everywhere. We also recycle all our offcuts from production with our partner MBA Polymers.



E. Extending Life: Mannequino® panels can be replaced

Mannequino are made of a unique set of panels, making it easy to identify and replace individual panels over time, immediately increasing the lifespan without having to replace the whole bodyform.



F. Supply chain transparency

Our components are made with materials that are certified to standards RoHS, REACH, WEEE, and ISO 14001: 2004 Environmentally Managed.

G. Waste Recycling and Mushrooms initiative

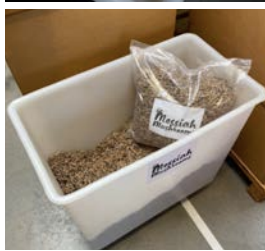
We shred the cardboard packaging offcut waste we produce and turn it into food substrate for growing gourmet mushrooms.

We also source other waste products locally to feed our mycellium, including used coffee grains from local cafes. Our compost is provided to other local growers after harvesting, leaving zero waste for us and helping to support food security for our community.

We have developed special agri-tech modules to grow the mushrooms, focusing on high water quality and low energy production. The system supports an inclusive working environment, and employment opportunities for rural parents, and produces high yields and excellent tasting produce. We supply gourmet mushrooms to top chefs in several restaurants and hotels in our locale every week.



Instagram @messiahmushrooms



Chef Kareem Roberts @brokedinner



CASE
STUDY

From mannequins to mushrooms



Can offcuts from our store mannequins become food for mushrooms? As we step into the circular economy, this is the sort of outlandish question we are asking ourselves.

When Kathmandu established a new partnership with visual merchandising supplier Mannequino in FY23, we saw this as an opportunity to look at waste in a completely new light.

Mannequino manufactures super lightweight, compact and recyclable display assets. Designed with 3D

printing technology, Mannequino's products are made from durable polypropylene that use up to 50 times less raw material than traditional mannequins. Flat-packed mannequins are easier to ship, which reduces transport emissions. And when they reach the end of their useful life, each mannequin can be recycled down to pellets and remade into new display assets.

This year, Mannequino pushed the boundaries even further with an innovative process that transforms the cardboard offcuts from

mannequin packaging into delicious gourmet Oyster mushrooms. The offcuts from Kathmandu mannequins are shredded into mulch, mixed with coffee waste, hardwood and straw, and then transferred to growing chambers alongside Mannequino's Cambridgeshire manufacturing facilities. And voila! Mushrooms are harvested and distributed to local restaurants in the Cambridge area.

One ingenious idea that turns fashion merchandising waste into food embodies KMD Brands' quest for circular innovation.



Opposite page: Kathmandu's Annual Integrated Report 2023 showcases our partnership with them, turning fashion merchandising waste into food. From the factory to the farm, to the table! See below a beautiful smoky coffee glazed Messiah mushroom risotto at MJP's .



Chef Mark Poynton at MJP@ The Shepherds

The following are dedicated to our international clients

BRITISH VOGUE

FASHION BEAUTY ARTS & LIFESTYLE RUNWAY SHOPPING NEWS VIDEO VOGUE SHOP VOGUE CLUB



Raeburn '15 Retrospective' AW24 Christopher Ræburn, curated by Harris Elliot



Ræburn '15 Retrospective' AW24 Christopher Ræburn, curated by Harris Elliot



Raeburn '15 Retrospective' AW24 curated by Harris Elliot



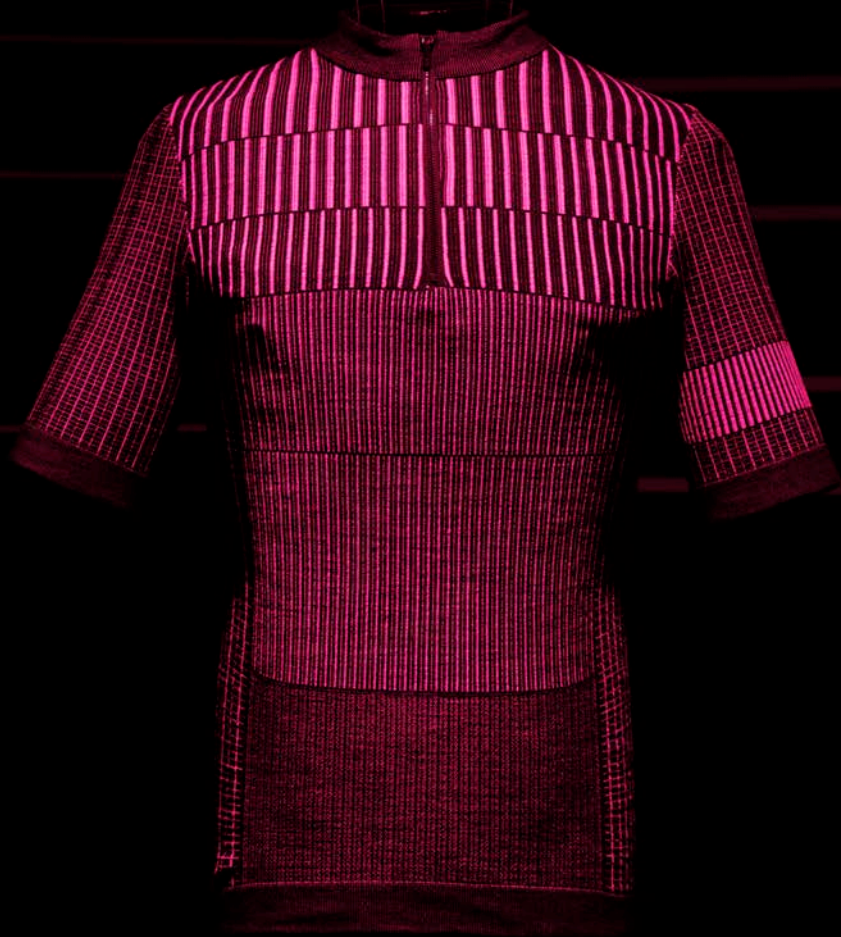
Ræburn '15 Retrospective' AW24 Christopher Ræburn, curated by Harris Elliot



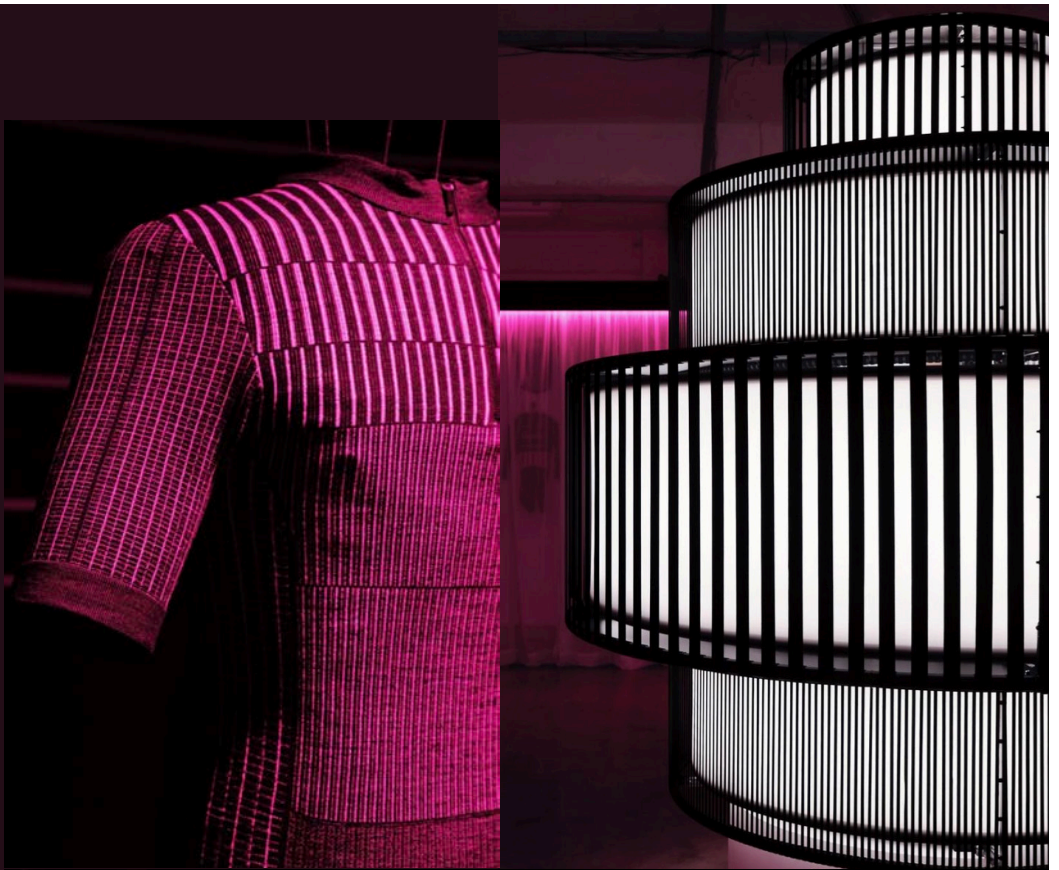
Ka De We, Germany. Installations by Heidrun Arianne Troendle
"Outerwear for Life Out There" – Alsterhaus store in Hamburg.



This unique project blended functional outerwear, on hanging Mannequino forms with the breathtaking aerial photography of Jan Erik Waider



Rapha London, 'Past Forward' Exhibition, Truman Brewery



Rapha London, 'Past Forward' Exhibition, Truman Brewery



Ka De We, Germany



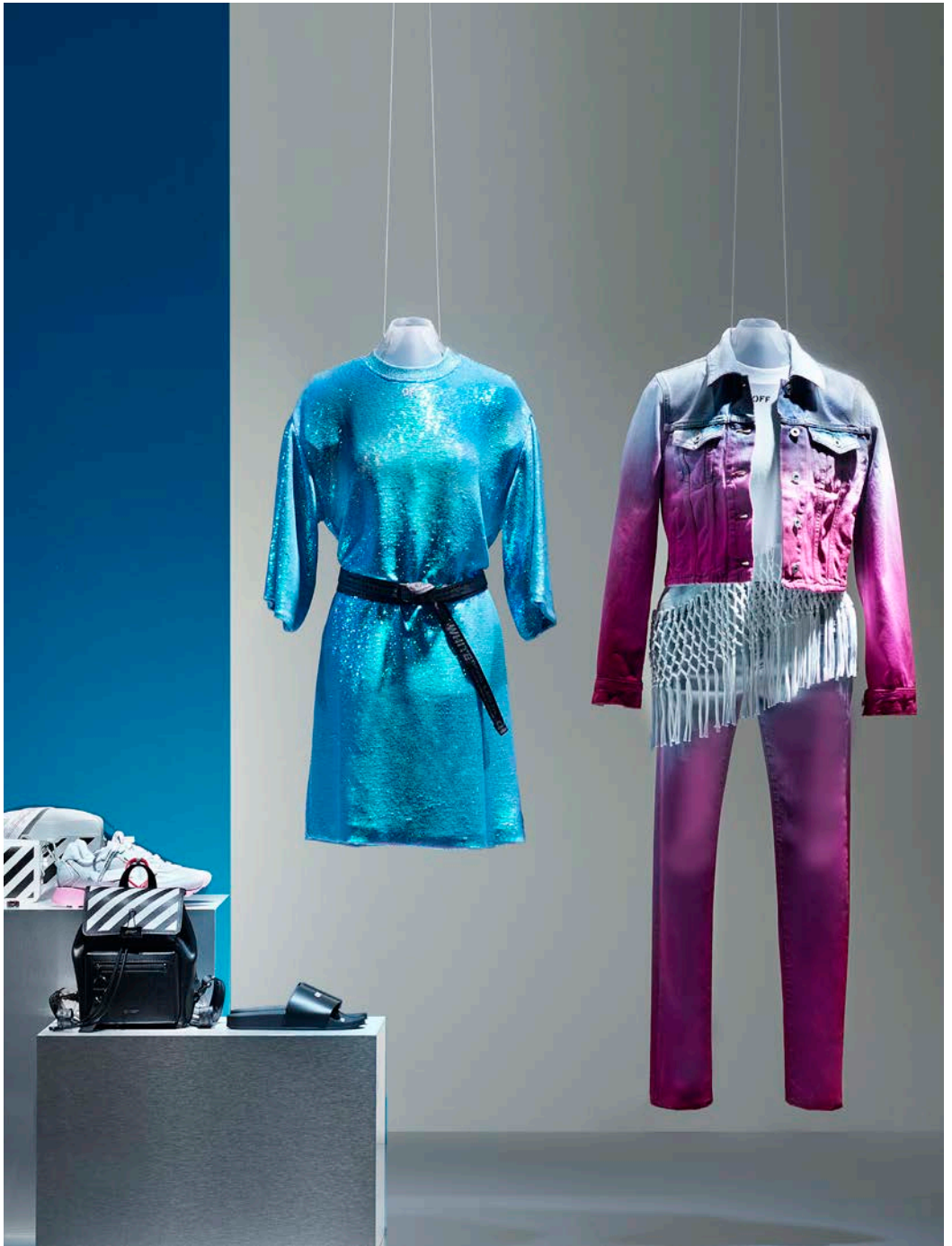
VAI

PHILOSOPHY

BOYY

JIMMY CHOO X YI

Ka De We, Germany

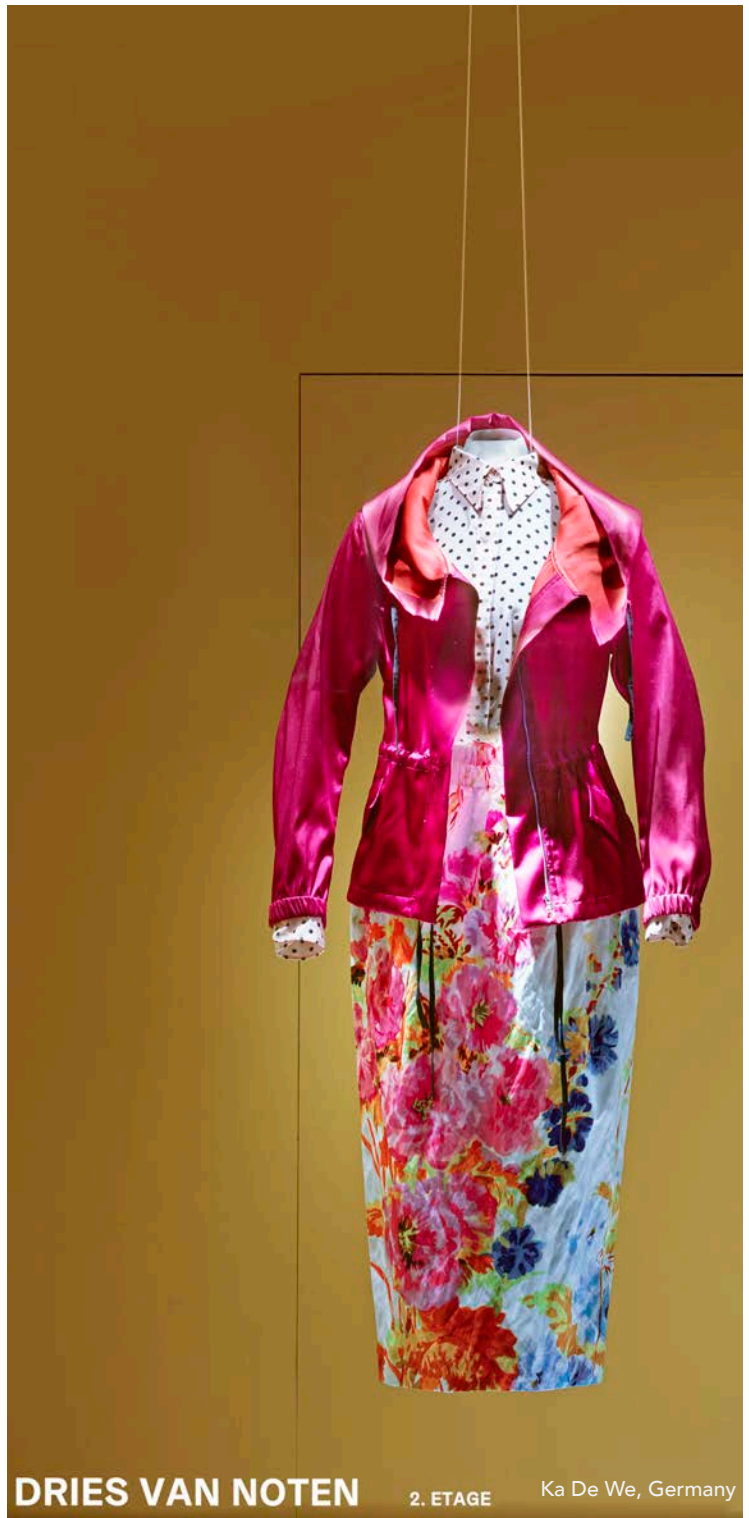


Ka De We, Germany



Ka De We, Germany





DRIES VAN NOTEN

2. ETAGE

Ka De We, Germany





Alexander Mc Queen, MCQ, Icon Genesis II















Tommy Hilfiger roll out



the
DESIGN
MUSEUM

Tommy Hilfiger





Fashion for Good Museum, Amsterdam





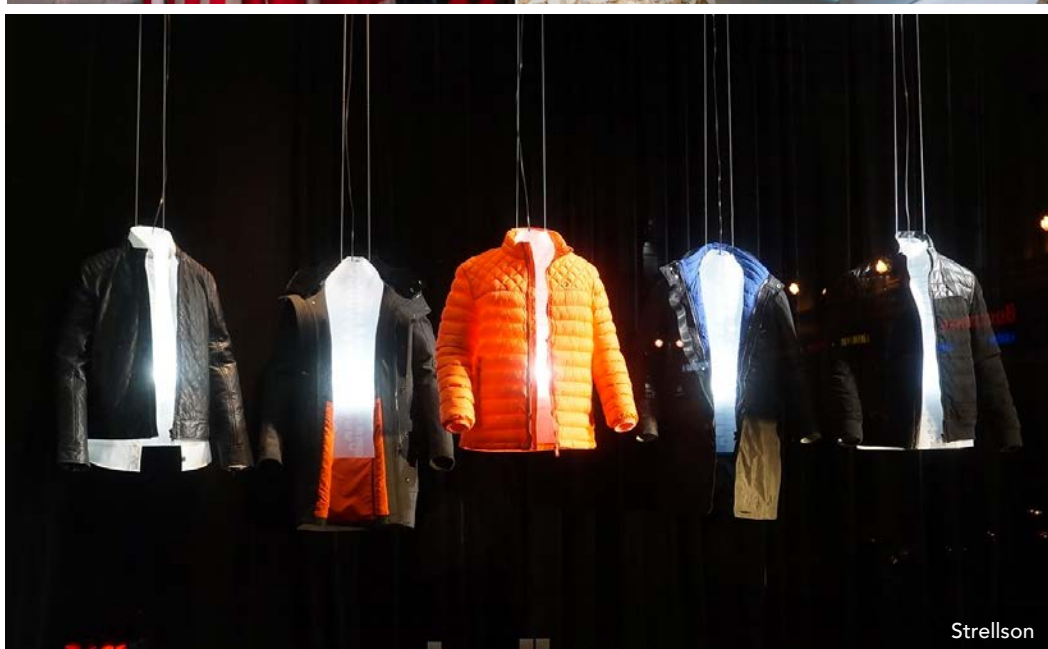
Fashion for Good Museum, Amsterdam



Missing Threads, Somerset House - Harris Elliot



Missing Threads, Somerset House - Harris Elliot

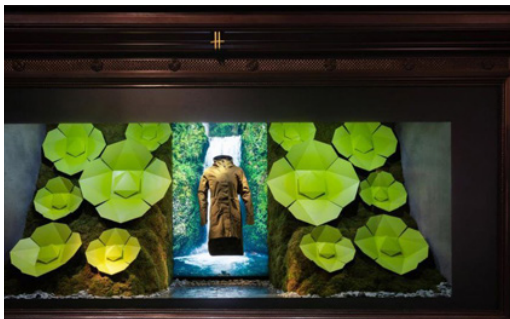








Lisa Folawayo Design Museum London



Canada Goose, Harrods



Canada Goose, Selfridges



Canada Goose, Selfridges





GEOX







Celebrating 50 years of Denim Jacket, Levis HQ, San Francisco, USA



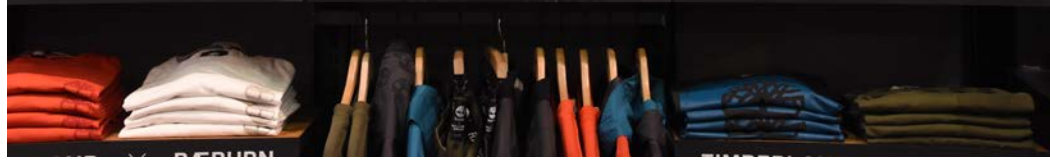




TIMBERLAND X RÆBURN



ERLAND X RÆBURN







COTSWOLD
Outdoor

10
YEARS ON

Tried, tested and loved for over a decade. The next generation Rab Microlight, now in-store.

Rab
THE MOUNTAIN PEOPLE

MICROLIGHT SUMMIT
INSPIRED • INNOVATIVE • PERFECTED

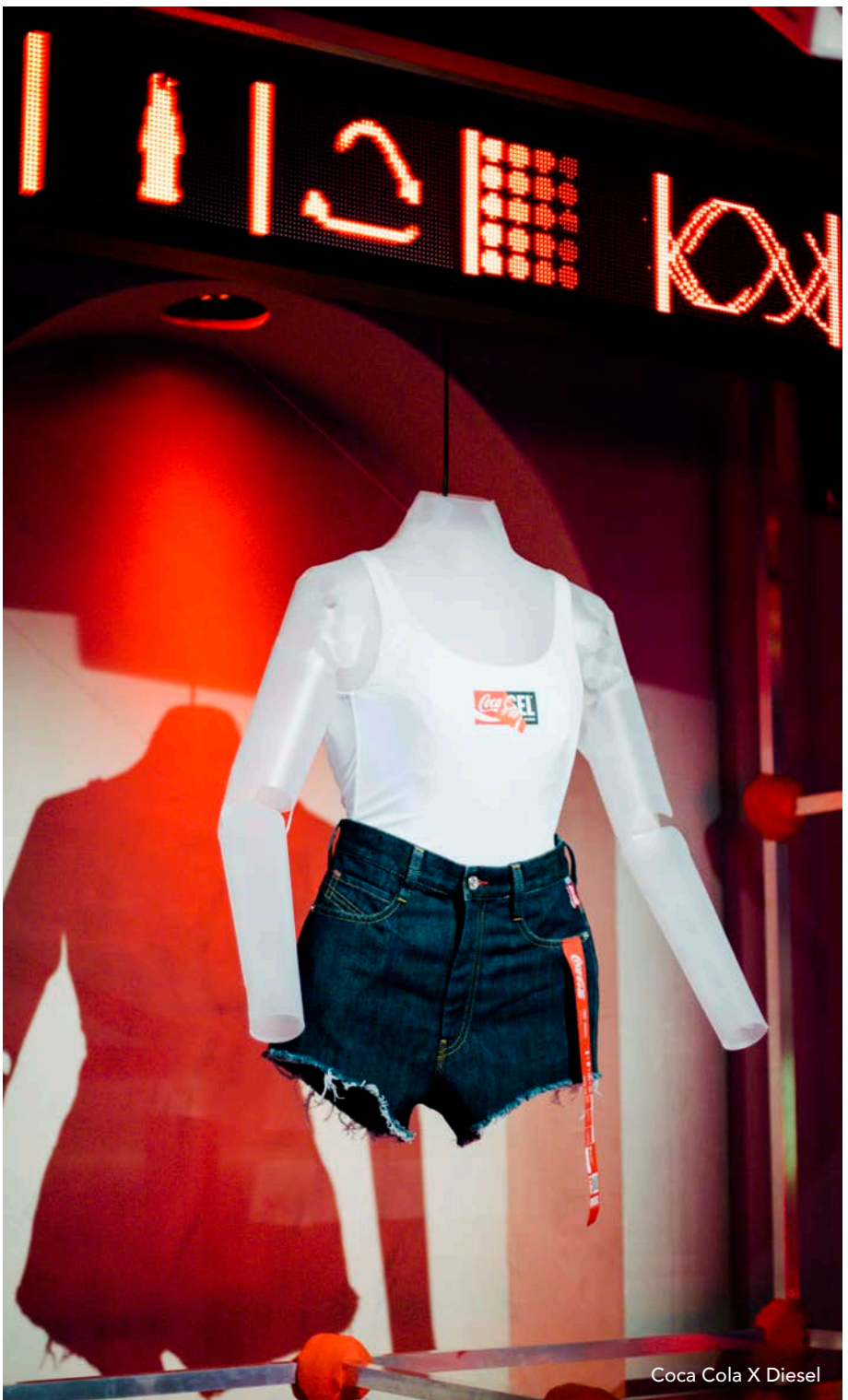
MICROLIGHT ALPINE
REFINED • RESILIENT • LIGHT

MICROLIGHT SUMMIT
INSPIRED • INNOVATIVE • PERFECTED

Rab
THE MOUNTAIN PEOPLE

Cotswold Outdoor

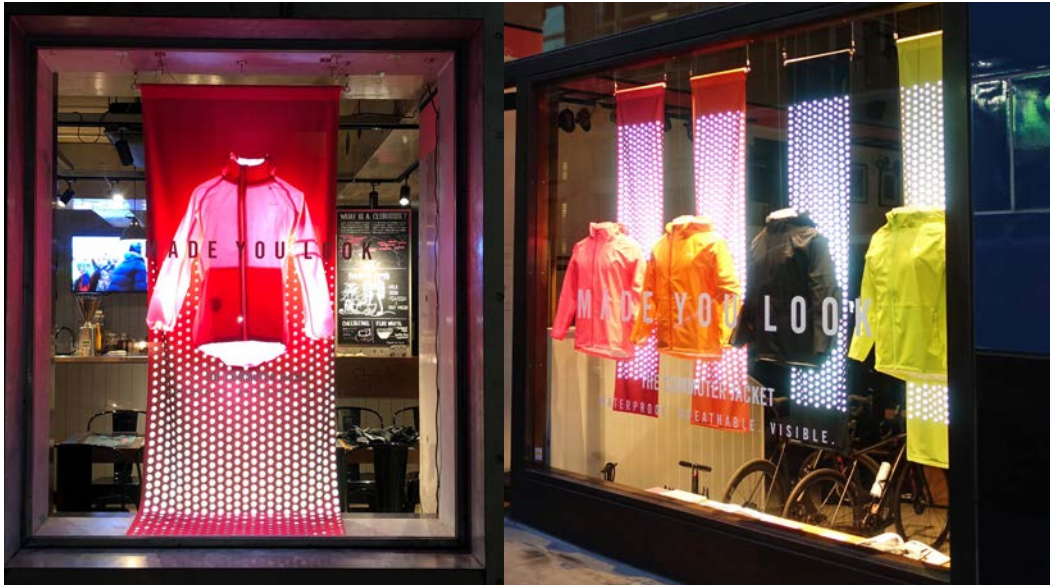




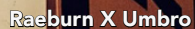
Coca Cola X Diesel



Puma



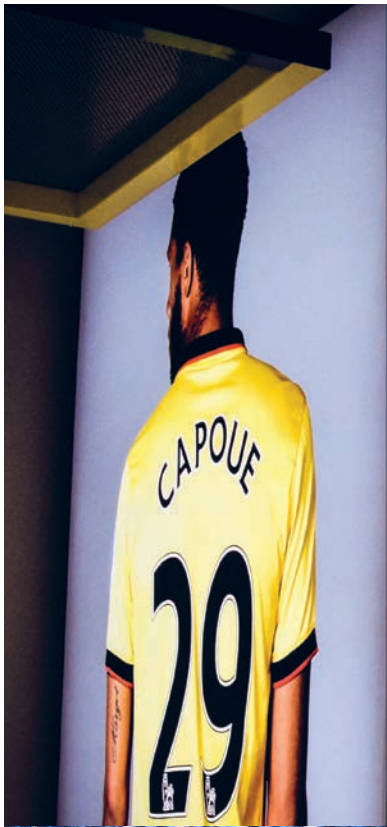
Rapha











Watford Football Club, Hornets Shop, London

REGD

1946

RODD & GUNN

NEW ZEALAND



1830





Contact us:

Telephone: ++44 (0)1223 491 488

Email: info@mannequino.com

Instagram: [@popupmannequino](https://www.instagram.com/popupmannequino)

Our website:

www.mannequino.com

Our HQ:

ARCC Innovations

Pampisford Road, Great Abington,

Cambridgeshire, CB21 6AH,

United Kingdom

By appointment:

To make a visit to see us contact us at info@mannequino.com

Mannequino is manufactured in the U.K. and is the trademark of Systematique Ltd a company registered in the UK,
Company no. 7882788 VAT no. GB170741028





Our print policy

We print our catalogues by hand on demand to reduce waste.